

Answer all the questions.

Each question is followed by four options lettered A to D. Find out the correct option for each question and shade in pencil on your answer sheet, the answer space which bears the same letter as the option you have chosen.

Give only one answer to each question. An example is given below.

Which of the following is **not** an ocean current in the North Atlantic?

- A. Labrador
- B. Benguela
- C. Cayenne
- D. Irminger

The correct answer is Benguela, which is lettered B and therefore answer space B would be shaded.

[A]

B

[C]

[D]

Think carefully before you shade the answer spaces; erase completely any answer(s) you wish to change.

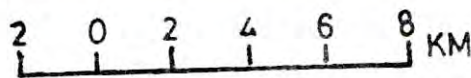
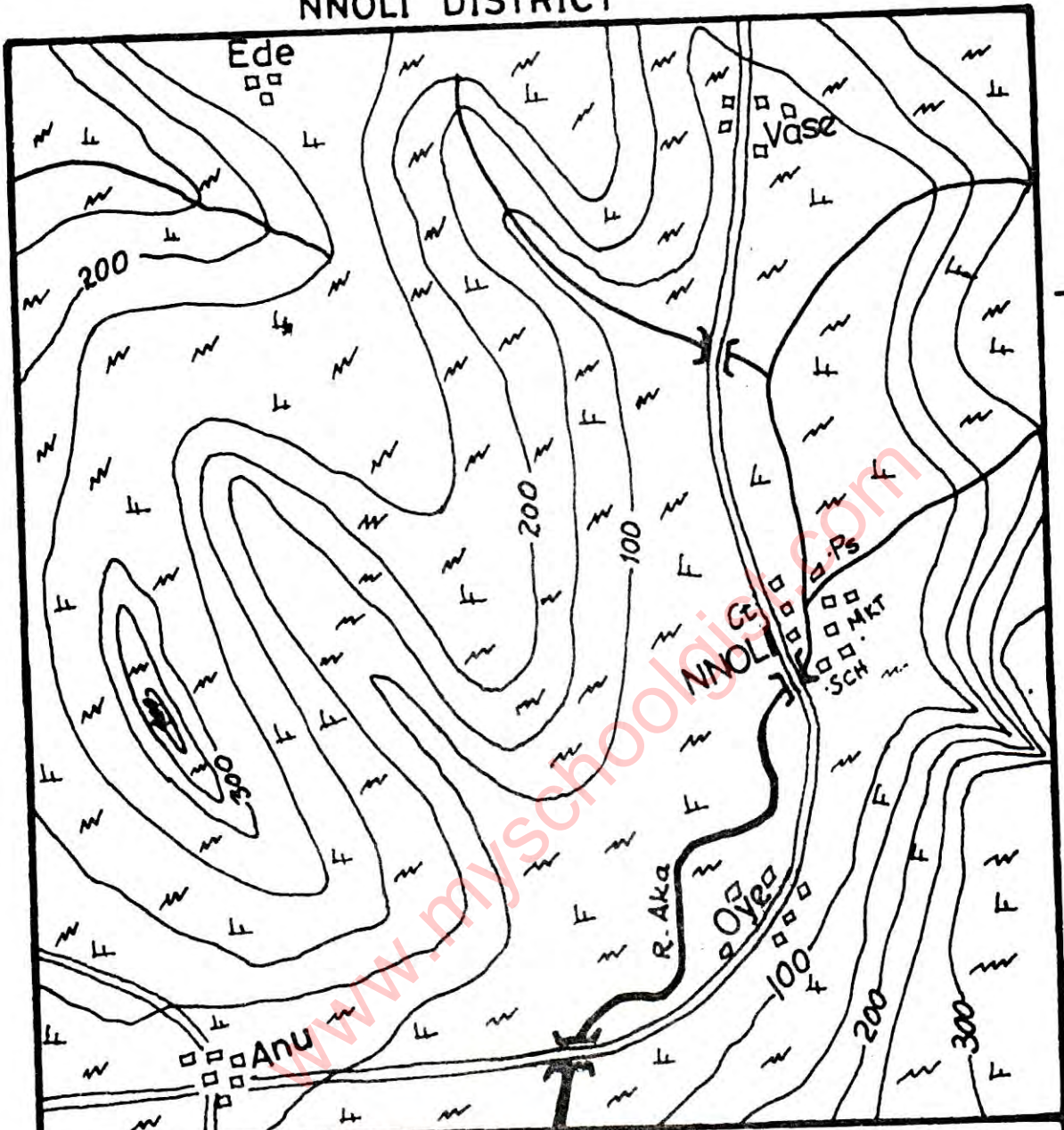
Do all rough work on this question paper.

Now answer the following questions.

Study the map of NNOLI DISTRICT on page 3 and use it to answer Questions 1 – 10.

1. The scale of the map in Representative Fraction (RF) is
 - A. 1 : 800,000.
 - B. 1 : 600,000.
 - C. 1 : 400,000.
 - D. 1 : 200,000.
2. The distance “as the crow flies” from Ede to Oye is
 - A. 30 km.
 - B. 35 km.
 - C. 40 km.
 - D. 45 km.
3. What type of settlement is Anu?
 - A. Linear
 - B. Dispersed
 - C. Nodal
 - D. Port town

NNOLI DISTRICT



KEY

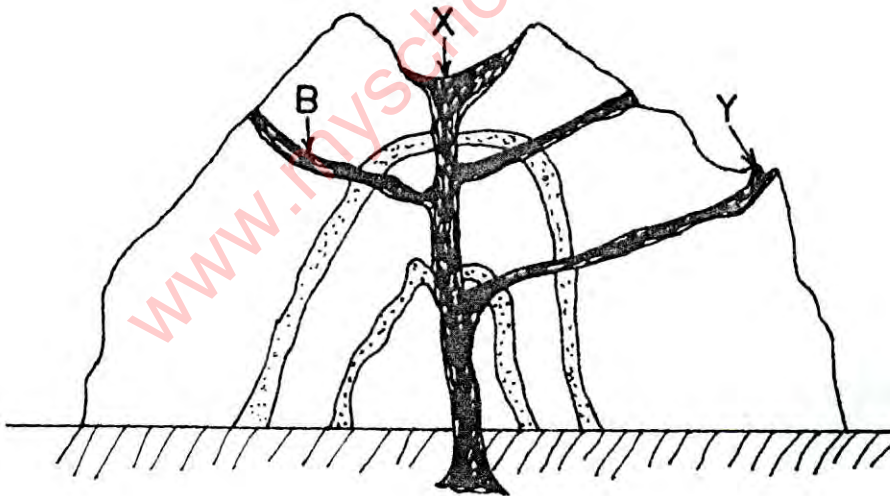
100	Contour in metres	Ps	Police station
	Road		Savannah scrub
	River		Settlement
	Scattered cultivation		Bridge
MKT	Market		
Ct	Court House		

Turn over

4. The **highest** contour line on the map is
- A. 400 m.
 - B. 350 m.
 - C. 250 m.
 - D. 200 m.
5. If the map is enlarged to twice its size, the new scale will be
- A. 1 : 100,000.
 - B. 1 : 200,000.
 - C. 1 : 300,000.
 - D. 1 : 600,000.
6. The distance by road in kilometres from Vase to Anu is approximately
- A. 12.
 - B. 44.
 - C. 66.
 - D. 88.
7. **NNOLI** is likely to be the **most** important settlement in the area because it is
- A. both an administrative and a commercial centre.
 - B. a nucleated settlement.
 - C. on a road and river junction.
 - D. at the centre of the map.
8. The bearing of **NNOLI** from Anu is
- A. N 55° E.
 - B. S 55° E.
 - C. S 50° E.
 - D. S 50° W.
9. The crop that is **most likely** to do well in **NNOLI** settlement is
- A. millet.
 - B. rice.
 - C. guinea corn.
 - D. yam.

10. Which of the following is a likely economic activity in **NNOLI DISTRICT**?
- A. Lumbering
 - B. Animal rearing
 - C. Crop cultivation
 - D. Mining
11. The solar system comprises the
- A. sun, the earth and pluto.
 - B. sun and the earth.
 - C. sun and its nine planets.
 - D. sun, the earth and the moon.
12. The **smallest** and **hottest** planet is
- A. mercury.
 - B. venus.
 - C. earth.
 - D. mars.
13. The earth completes its rotation on its own axis from west to east once in every
- A. 24 hours.
 - B. 48 hours.
 - C. 24 days.
 - D. 365 days.
14. The **Great Circle** includes **two**
- A. latitudes.
 - B. longitudes.
 - C. latitudes and longitudes.
 - D. opposite longitudes and the Equator.
15. In which of the following regions are the four seasons- spring, summer, autumn and winter better developed?
- A. Tropical
 - B. Temperate
 - C. Frigid
 - D. Equatorial

16. What will be the local time in country X, $15^{\circ}E$ when it is 5.00 p.m. in country Y, $45^{\circ}E$?
- 1 p.m.
 - 2 p.m.
 - 3 p.m.
 - 4 p.m.
17. Regions lie in high latitudes when they are between
- latitude 0° and 60° south.
 - latitude 60° and the Poles.
 - latitude 60° and the North Pole only.
 - latitude 0° and the South Pole.
18. Igneous rocks are formed when
- glacier transports and deposits materials in layers.
 - rivers transport and deposit materials along their banks.
 - materials from the earth's interior are poured into the earth or unto the surface.
 - materials are transported and deposited by the wind.
19. Another name for residual mountain is
- volcanic mountain.
 - mountain of denudation.
 - mountain of elevation.
 - mountain of intrusion.



Use the diagram above to answer questions 20 and 21.

20. The feature marked X is a
- pipe.
 - crater.
 - sill.
 - cone.

21. The feature marked **B** is a
- A. subsidiary dyke.
 - B. batholith.
 - C. sill.
 - D. lopolith.
22. A **major** characteristic of limestone landscape is
- A. absence of surface drainage.
 - B. absence of depression.
 - C. presence of surface drainage.
 - D. presence of luxuriant vegetation.
23. Permafrost is
- A. gentle breeze all year round.
 - B. permanently frozen subsoil.
 - C. very heavy frost.
 - D. corrugation on the surface due to freezing.
24. Soils which have developed under similar climatic conditions are classified as
- A. intra zonal soils.
 - B. azonal soils.
 - C. zonal soils.
 - D. horizontal soils.
25. "The soil is coarse, gritty, loose with large pore spaces, well aerated and has high capillarity". Which type of soil does this describe?
- A. Clay
 - B. Loamy
 - C. Sandy
 - D. Clay-loam
26. Which of the following is **not** an economic benefit of soil to mankind?
- A. Provision of minerals
 - B. Base for vegetation
 - C. Base for agriculture
 - D. Soil erosion

27. A kind of wind-deposited soil is
- A. scree.
 - B. talus.
 - C. loess.
 - D. laterite.
28. "The trees are evergreen, with broad leaves, having three tiers of canopy of heterogenous character, with abundant hardwood". Which vegetation type does this describe?
- A. Cool temperate forest
 - B. Tropical rain forest
 - C. Tropical grassland
 - D. Mediterranean woodland
29. Mediterranean vegetation is described as xerophytic. This means the vegetation is
- A. cold resistant.
 - B. drought resistant.
 - C. heat resistant.
 - D. fire resistant.
30. All the following explain the causes of desert encroachment **except**
- A. deforestation.
 - B. bush burning.
 - C. controlled grazing.
 - D. prolonged drought.
31. Which of the following pairs of environmental hazards are rare to find in the same place?
- A. Drought and desertification
 - B. Flood and thunderstorms
 - C. Hurricane and typhoon
 - D. Drought and flood
32. What type of forest is found where both temperature and rainfall are high throughout the year?
- A. Temperate forest
 - B. Coniferous forest
 - C. Tropical monsoon forest
 - D. Tropical rainforest

33. The high diurnal temperature range in tropical deserts is **best** explained by
- A. absence of cloud cover.
 - B. absence of onshore winds.
 - C. very low rainfall.
 - D. very low humidity.
34. A plunge pool can be found at the
- A. lower course of a river.
 - B. confluence of two rivers.
 - C. foot of a waterfall.
 - D. centre of a crater lake.
35. River Niger has its source in the
- A. Tibesti plateau.
 - B. Eastern highlands.
 - C. Guinea highlands.
 - D. Deccan plateau.
36. A change in the function of a settlement from a rural character to an urban character is called
- A. conurbation.
 - B. urbanization.
 - C. indigenization.
 - D. industrialization.
37. The high population concentration of people along the Nile valley in Egypt is **best** explained by
- A. favourable climate.
 - B. unfavourable relief.
 - C. availability of water for irrigation.
 - D. presence of minerals.
38. Which of the following **best** explains the high population density along the valleys of the big rivers of South East Asia?
- A. Abundance of water supply
 - B. Abundant supply of Hydro Electric Power (HEP)
 - C. The rivers provide good waterway for movement of people
 - D. The valleys have fertile alluvial soils for productive agriculture

39. Countries embark on industrialization for the following reasons **except**
- A. conservation of foreign exchange.
 - B. improvement in the standard of living of the people.
 - C. creation of unemployment.
 - D. diversification of the economy.
40. The world's **busiest** shipping route is
- A. Japan to South America.
 - B. West Africa to Japan.
 - C. North America to Europe.
 - D. South East Asia to West Africa.
41. The method of mining petroleum is by
- A. open cast.
 - B. drilling.
 - C. panning.
 - D. adit.
42. The volume of trade between West African countries and developed countries is high because of
- A. similarity of products.
 - B. similarity in climate.
 - C. differences in level of technology.
 - D. poor transport links.
43. Which of the following is **not** a tree of the tropical rain forest?
- A. Mahogany
 - B. Oak
 - C. Iroko
 - D. Obeche

44. The natural vegetation of a cool temperate maritime type of climate is
- A. Deciduous forest.
 - B. Savanna.
 - C. Taiga.
 - D. Thorn woodland.
45. The climatic conditions for fruit farming in the Mediterranean region include all **except**
- A. high relative humidity of up to 90%.
 - B. bright sunny weather for ripening and harvesting.
 - C. long dry summer.
 - D. rainfall of up to 75 cm per annum.
46. Which of the following is a Francophone country?
- A. Ghana
 - B. Liberia
 - C. The Gambia
 - D. Togo
47. The Kariba Dam Hydro-Electric scheme is in
- A. Nigeria.
 - B. Zambia.
 - C. Sierra Leone.
 - D. Ethiopia.
48. Paper is **mostly** manufactured from
- A. jute.
 - B. chemical.
 - C. synthetic fibre.
 - D. wood pulp.

49. Which of the following is grown in West Africa?

- A. Oat
- B. Apricot
- C. Millet
- D. Barley

50. Which of the following countries in Africa is the **most** densely populated?

- A. Ghana
- B. Sudan
- C. Algeria
- D. Nigeria

www.myschoolgist.com

SECTION B

1 hour 50 minutes

ESSAY

[70 marks]

ELEMENTS OF PRACTICAL AND PHYSICAL GEOGRAPHY

*Answer Question 1 and any three others.**Question 1 carries 22 marks while others carry 16 marks each.**You are advised to spend not more than 30 minutes on Question 1.*

1. Study the map extract on a scale of 1:50,000 and answer the following questions:

(a) On the map provided, print the letters shown in bracket on **one** example of each of the following features:

- (i) spur (SP); [2 marks]
- (ii) pass (PA); [2 marks]
- (iii) knoll (KN); [2 marks]
- (iv) ridge (RG); [2 marks]

(b) Calculate the distance from the school at Ogga to the school at Okere along the minor road. [6 marks]

(c) Using evidence from the map, state **three** land use types that are visible as one travels along the road from Ogbe to Koro. [6 marks]

(d) Name **two** human features that are present in the north-western part of the map. [2 marks]

2. Study the table below and answer the questions that follow.

Month	J	F	M	A	M	J	J	A	S	O	N	D
Temperature (°C)	26	26	27	29	31	33	35	34	33	32	30	27
Precipitation (mm)	38	15	15	20	0	0	0	0	0	8	18	36

(a) (i) Calculate the mean annual temperature. [2 marks]

(ii) Calculate the annual temperature range. [2 marks]

(iii) In what climatic region can this station be found? [2 marks]

(b) Draw a combined temperature and precipitation graph for the station. [10 marks]

3. (a) Distinguish between rotation and revolution of the earth. [4 marks]
(b) Describe **three** effects **each** of the earth's rotation and revolution. [12 marks]
4. (a) Draw a labelled diagram of the relief of the ocean floor. [6 marks]
(b) Explain with examples, reasons for which the continental shelves provide the world's major fishing grounds. [10 marks]
5. (a) Define *mass wasting*. [2 marks]
(b) List **two** factors affecting mass wasting. [2 marks]
(c) Describe any **two** types of mass wasting. [12 marks]
6. Write explanatory notes on any **two** of the following:
(a) convectional rainfall; [8 marks]
(b) land and sea breezes; [8 marks]
(c) Inter-Tropical Convergence Zone (ITCZ). [8 marks]
7. (a) Explain **four** conditions that favour the formation of delta. [8 marks]
(b) Describe any **two** types of delta. [8 marks]
8. (a) Define *environmental balance*. [2 marks]
(b) With the aid of a diagram, explain the water cycle. [8 marks]
(c) In what **three** ways is water cycle important to man? [6 marks]