



- B. Affected cities are flashpoints of economically and politically motivated protests
  - C. High level of urban-rural migration
  - D. Low rate of development
7. A scale of 1:100,000 is the same as
- A. 1cm:10km
  - B. 1cm:100km
  - C. 1cm:1000km
  - D. 1cm:1km
8. If the vertical interval between two locations on a map is 500metres and the horizontal distance between them is 5000metres, what is the average gradient between the two places?
- A. 1:50
  - B. 1:5
  - C. 1:10
  - D. 1:100
9. On a topographic map, the index to adjoining sheet is used to
- A. Know the latitudinal location of the map
  - B. To show clearly the features on the map
  - C. To locate magnetic north on the map
  - D. To know the next adjoining sheet in the map series
10. In the USA, short and long grasses can be found in which region?
- A. rocky areas
  - B. woodland areas
  - C. prairies
  - D. forests
11. Tropical Climate is found in which part of North America
- A. Eastern
  - B. Southern
  - C. Western
  - D. Northern
12. Which of the following aspects of Nigerian climate increases from south to north?
- A. Average annual rainfall
  - B. Length of rainy season
  - C. Length of dry season
  - D. Dependability of rainfall
13. The main industrial activities in Nigeria are concentrated in the following zones  
**EXCEPT**
- A. Lagos – Ikeja axis
  - B. Kaduna –Kano-Jos
  - C. Aba-Port Harcourt
  - D. Lokoja – Ajaokuta zone

E. Ibadan – Abeokuta

14. What are the two prominent economic potentials of the Chad Basin?
- A. Fishing and irrigation agriculture
  - B. Fishing and Tourism
  - C. Tourism and petroleum drilling
  - D. Sorghum and livestock production
  - E. Fishing and wheat production
15. One of the theories which describe the birth of the universe is
- A. Gravitational law
  - B. Law of Relativity
  - C. Bing Bang
  - D. Origin of Species
16. The satellite of the earth is
- A. Sun
  - B. Stars
  - C. Moon
  - D. Spot
17. The major minerals of the continental crust are
- A. Sima
  - B. Sial
  - C. Olivine
  - D. Phosphorus
18. The first country to travel within our solar system is
- A. USA
  - B. Britain
  - C. Defunct USSR
  - D. Russia
19. Orogeny means
- A. Ocean moving
  - B. Faulting
  - C. Mountain building
  - D. Continental drifting
20. Mass wasting is the movement of rocks under the force of
- A. Relativity
  - B. Coriolis
  - C. Centripetal
  - D. Gravity.
21. Hydraulic action is usually followed by
- A. Cavitation
  - B. Digging

- C. Barbing
- D. Corrasion

22. The only input into hydrological cycle is

- A. Evaporation
- B. Transpiration
- C. Rainfall
- D. Precipitation

23. The variation of the discharge of a river over a short time is depicted by a \_\_\_\_\_

- A. Graph
- B. Bar chart
- C. Histogram
- D. Storm Hydrograph

24. Which of the following is not an agent of erosion?

- A. Waves
- B. Wind
- C. Glacier
- D. Thunder

25. The dominant feature of interest to human geographers is

- A. The cultural landscape
- B. Technology
- C. Innovation
- D. Acculturation

26. One of the major attributes of a megacity like Lagos is

- A. It is a conglomerate of many smaller settlements
- B. It has the largest percentage of elderly people
- C. It has a very efficient transportation system
- D. It has no employment problem

27. What is the time in Nigeria when it is 1:30pm in London?

- A. 3:30 pm
- B. 2:30pm
- C. 2:30 am
- D. 3:30 am

28. When water recharge is equal to discharge, the water table is .....

- A. Unstable
- B. Stationary
- C. High
- D. Low

29. Igneous rocks formed below the earth's crust are called ..... igneous rocks

- A. Metamorphic
- B. Plutonic
- C. Extrusive
- D. Volcanic

30. The followings can cause environmental degradation **EXCEPT**

- A. Polymer fertilizer
- B. Flooding
- C. Erosion
- D. Conservation

31. What is the best method used in ploughing steep topography

- A. Heaping
- B. Excavation
- C. Contour ploughing
- D. Overturn ploughing

32. The following are factors of fertility rate **EXCEPT**

- A. Culture
- B. Poverty
- C. Sports
- D. Religion

33. The following countries export vegetation resources **EXCEPT**

- A. Nigeria
- B. Congo
- C. Benin
- D. Ivory coast

34. The busiest shipping route in the world is

- A. North Atlantic route
- B. Panama canal
- C. Suez canal
- D. Cape of good hope

35. Who owns and controls Panama Canal?

- A. Panama city
- B. USA
- C. Venezuela
- D. Mexico

36. The origin of disparity in regional development in Nigeria is

- A. Colonial administrative policies
- B. Low market
- C. Hostile business environment
- D. Absence of raw materials

37. Movement of industries out of the great lake region of USA is an example of .....
- A. Industrial transfer
  - B. Deindustrialization
  - C. Industrial transition
  - D. Industrial change
38. Nigerian refineries are not functioning because.....
- A. It is cheaper to refine outside
  - B. Poor management and corruption
  - C. Lack of capital
  - D. Lack of raw materials
39. The surface zone of the earth that is occupied by living organisms is referred to as the
- A. Atmosphere
  - B. Lithosphere
  - C. Biosphere
  - D. Hydrosphere
40. Sedimentary rocks are distinguished from other rocks by their
- A. Strata
  - B. Joints
  - C. Compact Nature
  - D. Crystalline nature
41. This is not a feature of the upper course of a river
- A. Oxbow lake
  - B. River capture
  - C. Gorge
  - D. Rapids and cataracts
42. Tropical Monsoon climate is found in this area
- A. Central America
  - B. Coasts of West Africa
  - C. Amazon Basin of South America
  - D. North Africa
43. Which of these statements is true of Africa?
- A. Africa is the fourth largest continent in the world
  - B. Africa is the least urbanized continent
  - C. Tropical Africa is so warm that nowhere within it can you find snow or ice
  - D. Africa produces nearly all the world's hard-wood timber
44. Industries can be classified as either light or heavy. Which of the following groups of industries can be classified as light?
- A. Foot wear and Block making

- B. Iron and steel and Cement
  - C. Tobacco and Automobile
  - D. Petroleum and Chemical
45. Which of the following countries is an important producer of crude oil?
- A. Germany
  - B. Kuwait
  - C. South Africa
  - D. Ethiopia
46. What is the commodity associated with OPEC?
- A. Iron and steel
  - B. Crude oil
  - C. Vegetable oil
  - D. Sugar
47. Which of the following shipping routes carries the world's harvest ocean traffic?
- A. Mediterranean Suez Canal-Indian Ocean
  - B. Western – Caribbean
  - C. Eastern North America – Western Europe
  - D. West Coast United State – Panama Canal
48. The major causes of population dynamics are
- A. Birth, Deaths and Migration
  - B. Births, Marriage and Divorce
  - C. Deaths, Disease and Divorce
  - D. Birth, Accidents and Deaths
49. Convert the scale 1cm to 4.5km to Representative Fraction
- A. 1:450,000
  - B. 1:45,000
  - C. 1:90,000
  - D. 1:44,000
50. In the calculation of average gradient, two things are involved.
- A. Elevation and depth
  - B. Vertical exaggeration and internal equivalent
  - C. Vertical Interval and horizontal equivalent
  - D. Vertical equivalent and horizontal Internal

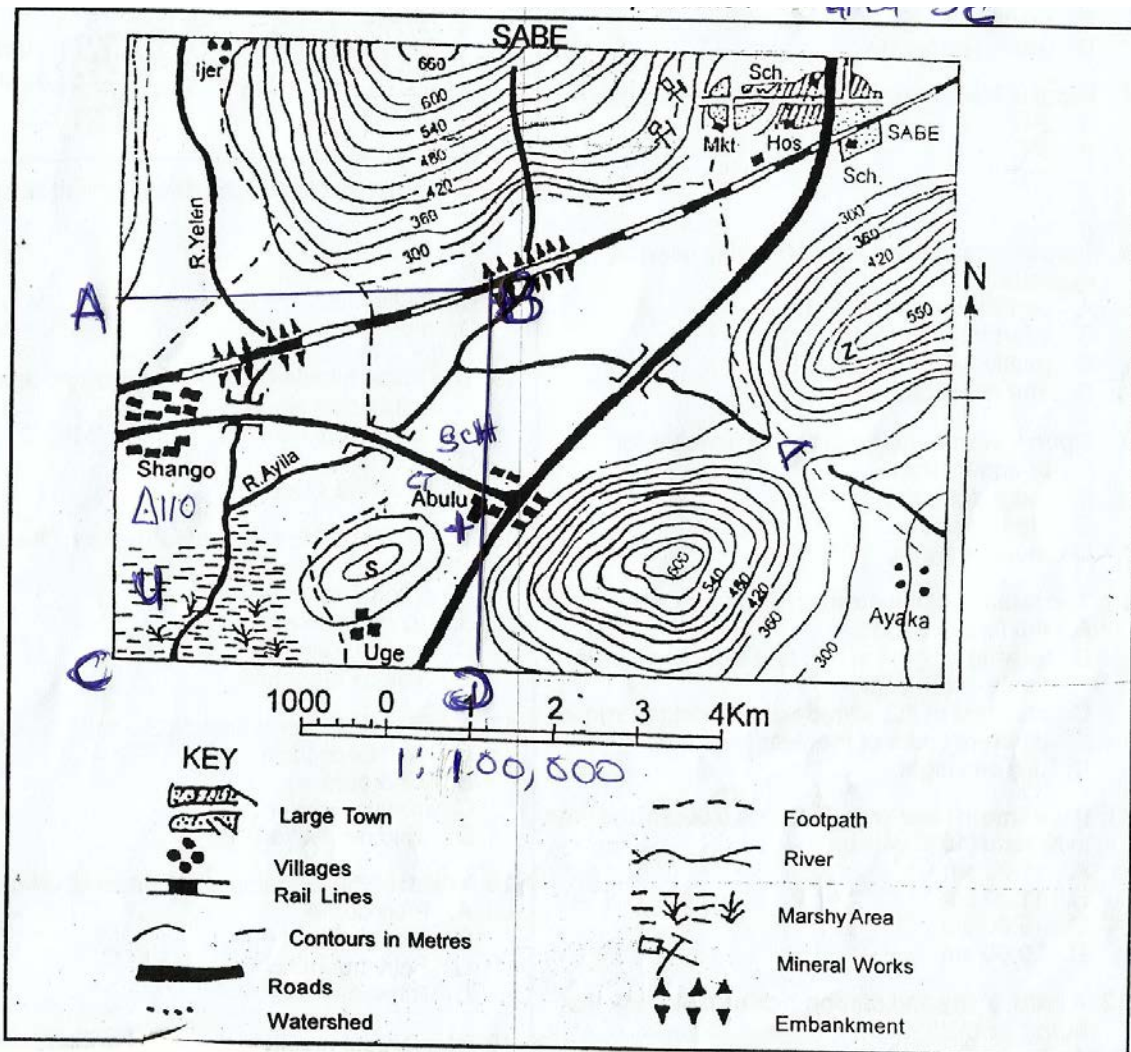
**JOINT UNIVERSITIES PRELIMINARY EXAMINATIONS BOARD (JUPEB)  
2015 EXAMINATIONS**

**GEOGRAPHY – MSS-J134**

## **GEOGRAPHY ESSAY QUESTIONS**

1. A. Define the term weathering. **(3marks)**  
B. Name any two processes of mechanical weathering and explain each of them. **(10marks)**  
C. Name one region in which mechanical weathering is most common. **(2marks) 001**
  
2. Define urbanization and explain the major problems associated with urban centres in the less developed regions of the world. **(15marks) 002**
  
3. Describe and explain the differences between tropical rainforest and Savannah vegetations. **(15marks) 001**
  
- 4a. What is lumbering?  
b. State the economic value of lumbering  
c. What are the problems associated with lumbering? **002**
  
5. What are the factors favouring cotton production in Southern USA? **(15marks) 004**
  
6. A. Define the term *scales* and by illustration describe the types of scales used by geographers **(5marks)**  
B. Discuss five (5) methods of showing relief on topographical maps. **(10marks) 003**
  
7. Give geographical account of the following:  
(i) Bush fallowing in West Africa **(9marks)**  
(ii) The decline in Bush fallowing **(6marks) 004**
  
8. Use the map below to answer the following questions





- Identify A, Z, S, U. **(4marks)**
- List the functions of SABE Settlement? **(5marks)**
- State the vertical interval for SABE settlement **(1mark)**
- What is . 110? **(1mark)**
- Swamp rice and sugar cane plantation can best be cultivated in letter ..... **(1mark)**
- State the direction of flow of River Ayila? **(1mark)**
- Describe the drainage pattern exhibited by River Ayila and its tributaries **(1mark)**
- Limestone could possibly be located in which settlement, state your reason **(1mark)**